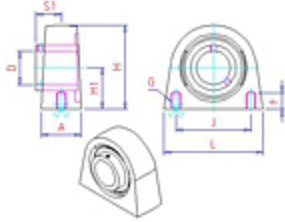




SKF USA, Inc.
 890 Forty Foot Rd
 Lansdale, PA
Phone: 1-267-436-6000 • **Fax:** 1-267-436-6001
Email: AskEngineeringHotline@skf.com
Website: <http://www.skf.com/us/products/mrc/index.html>

Item # ZTB100ZM, ZTB-ZM Series ZMaRC Coated Insert Bearings Inch



Specifications

Shaft Diameter D	1 in
Width A	1.5000 in
Height H	2.8125 in
Distance J	2.0000 in
Dimension H1	1.4375 in
Dimension L	3.0000 in
Dimension F	0.5000 in
Dimension S1	0.7813 in
Thread Diameter G	3/8-16
Weight W	2.00 lb
Basic Dynamic Radial Load Rating	3150 lbf
Basic Static Radial Load Rating Co	1750 lbf
Insert Bearing IB	ZMaRC